

YEAR

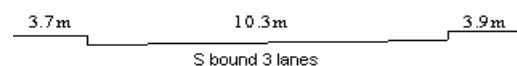
2015

LINK

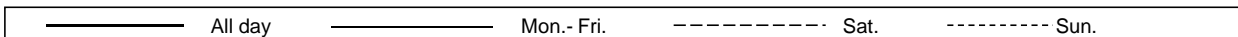
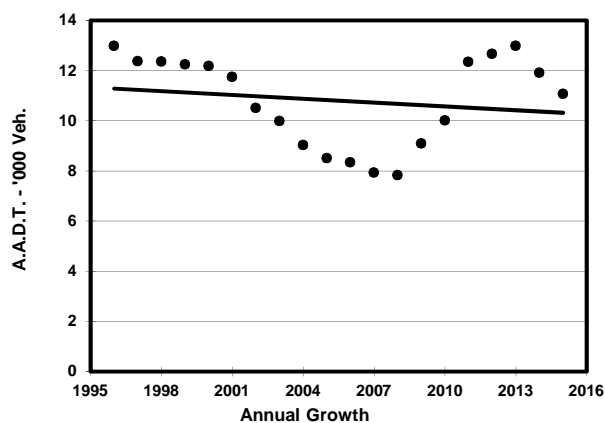
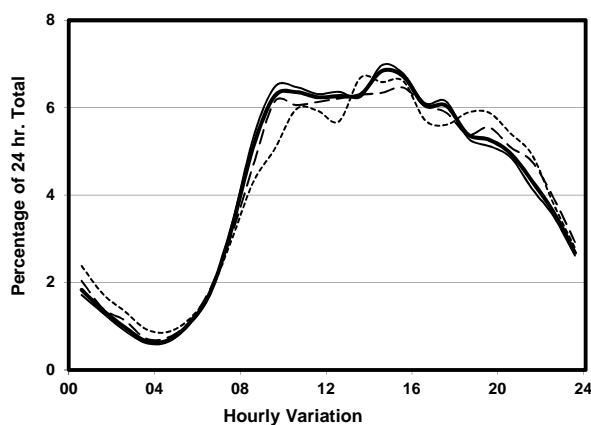
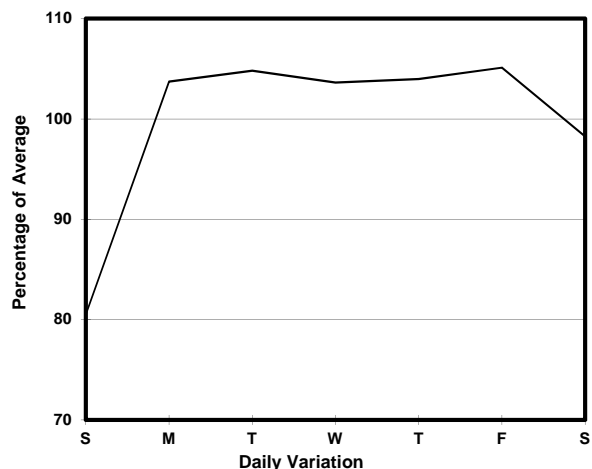
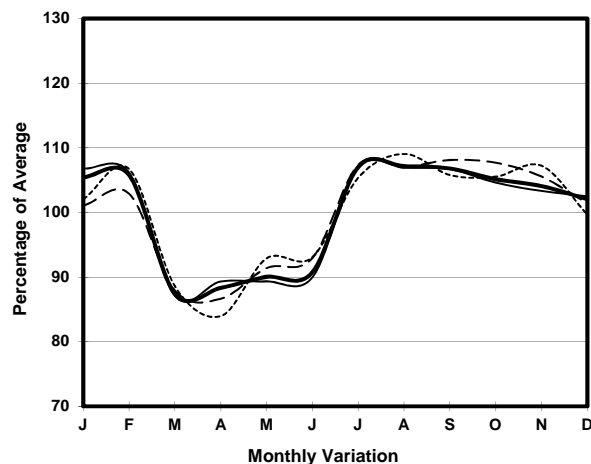
TSEUK LUK ST (from CHOI HUNG RD to KING FUK ST)

CORE STATION
ROAD NETWORK
ROAD TYPE

3105
MINOR
LOCAL DISTRIBUTOR



1. TRAFFIC FLOW VARIATION AND GROWTH



2. TRAFFIC CHARACTERISTICS (BY DIRECTION)

Parameter	All - Day	Mon. - Fri.	Sat.	Sun.
SOUTH BOUND				
A.A.D.T.	11070	11670	11050	8950
R 12 / 24 - %	70.8	71.8	68.7	67
R 16 / 24 - %	89	89.4	88.1	87
AM Peak Hour	0900-1000	0900-1000	0900-1000	0900-1000
One-way flow at AM peak hour	690	760	680	450
T - % (AM)	-	-	-	-
PM Peak Hour	1600-1700	1700-1800	1600-1700	1800-1900
One-way flow at PM peak hour	670	720	670	530
T - % (PM)	-	-	-	-
Prop.of commercial vehicles - 16 hr.	-	-	-	-
A.A.D.T.	-	-	-	-
R 12 / 24 - %	-	-	-	-
R 16 / 24 - %	-	-	-	-
AM Peak Hour	-	-	-	-
One-way flow at AM peak hour	-	-	-	-
T - % (AM)	-	-	-	-
PM Peak Hour	-	-	-	-
One-way flow at PM peak hour	-	-	-	-
T - % (PM)	-	-	-	-
Prop.of commercial vehicles - 16 hr.	-	-	-	-

3. OTHER INFORMATION AND COMMENT